

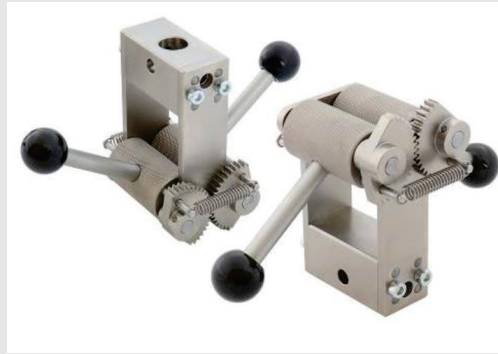
Eccentric Roller Grip

TAS766

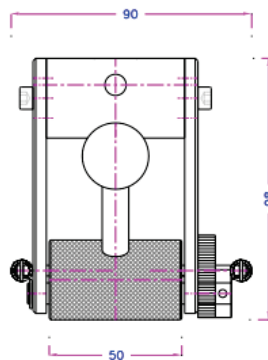
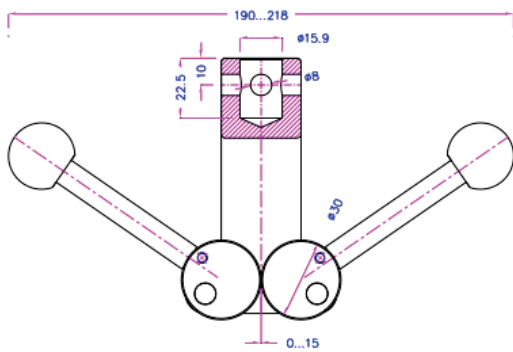
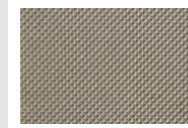
TAS766-5-2L Eccentric roller grip

The TAS766 Eccentric Roller Grip features a symmetric design and self-tightening non-slip gripping action. Coupling with 2 pin holes allows the grip to be turned at 90° in a tensile machine.

- Tensile force: 5 kN
- Opening 0-15 mm
- Standard coupling: Af159 or Af20
Further couplings on request
- Roller: 30 mm Ø, 50 mm wide,
pyramid (serrated)
- Body: Steel, nickel-plated
- Temperature range: 0° ... +70°C
Further temperature ranges on request
- Weight: 1.4 kg per grip
- Scope of delivery: 1 pair



Serrated Roller Surface



Thwing-Albert
Instrument Company



TA062322

thwingalbert.com

Eccentric Roller Grip

TAS766

TAS766-1-BP-W20

Custom Eccentric roller grip option

- Tensile force: 1 kN
 - Opening 0-10 mm
 - Standard coupling: Af159
 - Roller: 30 mm Ø, 50 mm wide, pyramid (serrated)
 - Body: Steel, nickel-plated
 - Temperature range: 0° ... +70°C
- Further temperature ranges on request
- Weight: 1.4 kg per grip
 - Scope of delivery: 1 pair



Thwing-Albert
Instrument Company



TA062322

thwingalbert.com

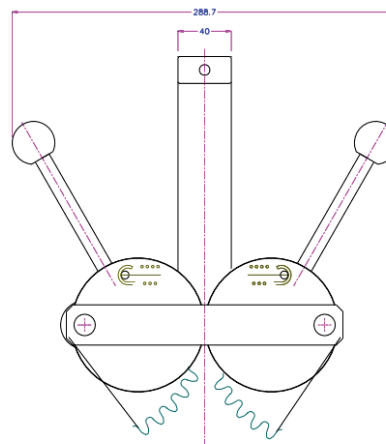
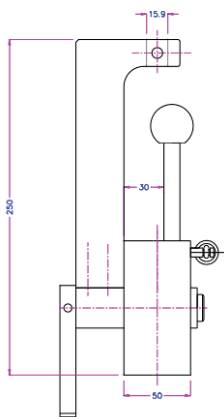
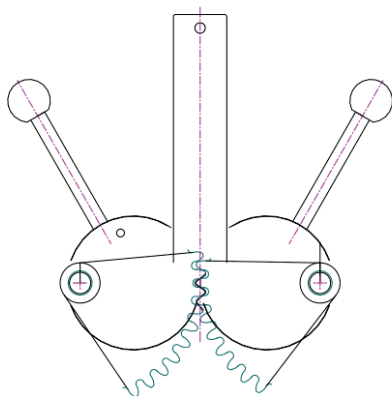
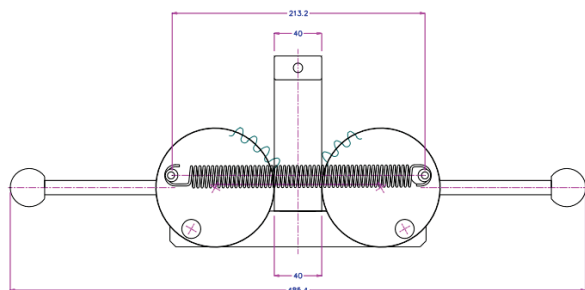
Eccentric Roller Grip

TAS766

TAS766-40

Custom Eccentric roller grip

- Tensile force: 5 kN
- Opening 0-40 mm
- Roller: 100 mm Ø, 50 mm wide, smooth
- Body: Steel
- Weight: 2 kg per grip
- Scope of delivery: 1 pair



Thwing-Albert
Instrument Company



TA062322

thwingalbert.com